



PT. BERJAYA MAKMUR INDONESIA

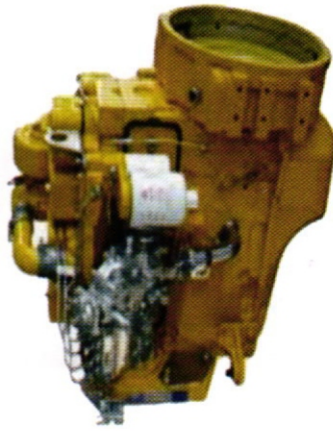
Jl.Cempaka Putih Tengah I No.A5, Cempaka Putih. Jakarta Pusat
Phone : (021) 4245561, 70885629, 71681936, Fax: (021) 4263525
Email : berjayamakmur99@gmail.com
Website : <http://www.arthur.comli.com>



EVERY TIME.

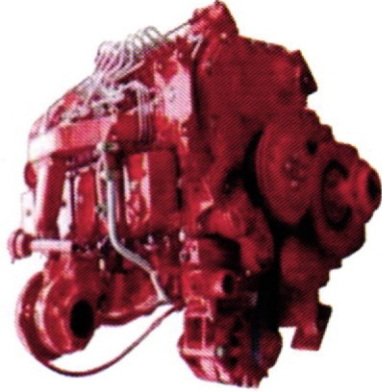


Cummins Industrial Engine



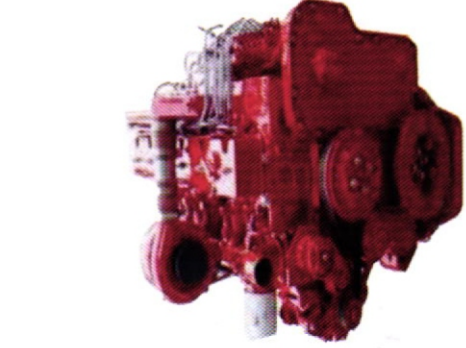
4B Series

- **High fuel efficiency** 20% fewer oil consumption than Other competitive products.
- **The turbo charger with wastegated design** optimizes operation across the torque curve resulting in excellent low-end torque.
- **Compacted yet durable and dependable engine** B series engine contains up to 40% fewer parts than competitive engines in its class, this result in a better power to weight ration, a less chance of failure and lower repair cost.
- **Advanced design and manufacturing** make the engine delivers superior performance and lower cost than competitive engines.
- **Excellent cold start performance** optional assistant cold starter with improved 6kw starter and intake air heater design to achieve higher horse power and lower weight horsepower per liter reached 24,9 Kw/l



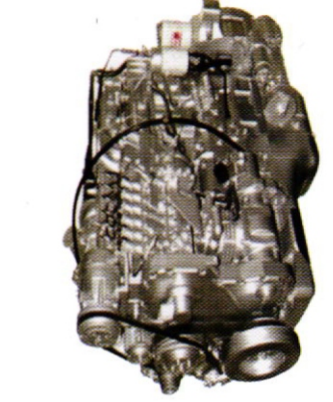
6B Series

- **High fuel efficiency** 20% fewer oil consumption than Other competitive products.
- **The turbo charger with wastegated design** optimizes operation across the torque curve resulting in excellent low-end torque.
- **Compacted yet durable and dependable engine** B series engine contains up to 40% fewer parts than competitive engines in its class, this result in a better power to weight ration, a less chance of failure and lower repair cost.
- **Advanced design and manufacturing** make the engine delivers superior performance and lower cost than competitive engines.
- **Excellent cold start performance** optional assistant cold starter with improved 6,6kw starter and intake air heater design to achieve higher horse power and lower weight horsepower per liter reached 22,4 Kw/l



C Series

- **High fuel efficiency** 20% fewer oil consumption than Other competitive products.
- **The turbo charger with wastegated design** optimizes operation across the torque curve resulting in excellent low-end torque.
- **Compacted yet durable and dependable engine** B series engine contains up to 40% fewer parts than competitive engines in its class, this result in a better power to weight ration, a less chance of failure and lower repair cost.
- **Advanced design and manufacturing** make the engine delivers superior performance and lower cost than competitive engines.
- **Excellent cold start performance** optional assistant cold starter with improved 7,8kw starter and intake air heater design to achieve higher horse power and lower weight horsepower per liter reached 23,0 Kw/l



L Series

- **24 Valve cylinder head** for increased air flow improved low end torque and response, higher power density improved fuel consumption and improved emissions.
- **heavy duty features** replaceable wet liners, roller followers, 2 piece steel articulated pistons, by pass oil filtration and targeted piston cooling.
- **Durable and dependable** articulated pistons with a forged steel crown and aluminum skirt for high durability.
- **Excellent performance and advantage** adopt advanced design to achieve higher horsepower and lower height. horsepower per liter reached 23,0Kw/l

PRODUCTS.

Ratings

Mode	Power kW/r/min	Torque N.m/r/min	Mode	Power kW/r/min	Torque N.m/r/min
B3.9	4BT3.9-C80	330/1500	B5.9 (6BTA)	6BTA5.9-C150	630/1400
	4BT3.9-C100	330/1500		6BTA5.9-C155	637/1500
	4BT3.9-C105	330/1500		6BTA5.9-C170	630/1400
	4BTA3.9-C110	460/1400		6BTA5.9-C175	680/1500
	4BTA3.9-C125	475/1500		6BTA5.9-C180	750/1500
	4BTA3.9-C130	475/1500			
B5.9 (6BT)	6BT5.9-C115	430/1500	C8.3	6CTA8.3-C145	674/1400
	6BT5.9-C120	436/1500		6CTA8.3-C175	820/1100
	6BT5.9-C125	425/1500		6CTA8.3-C180	837/1400
	6BT5.9-C130	560/1500		6CTA8.3-C195	820/1500
	6BT5.9-C135	570/1500		6CTA8.3-C215	908/1500
	6BT5.9-C135	590/1500		6CTA8.3-C215	908/1500
	6BT5.9-C135	560/1500		6CTA8.3-C230	1000/1500
	6BT5.9-C145	580/1500		6CTA8.3-C245	1028/1500
	6BT5.9-C150	560/1500			
	6BT5.9-C150	565/1500			
L8.9	6BT5.9-C150	580/1500	L8.9	6LTA8.9-C325	1350/1400
	6BT5.9-C150	580/1500			